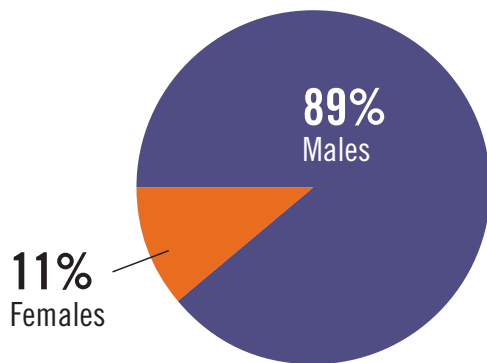


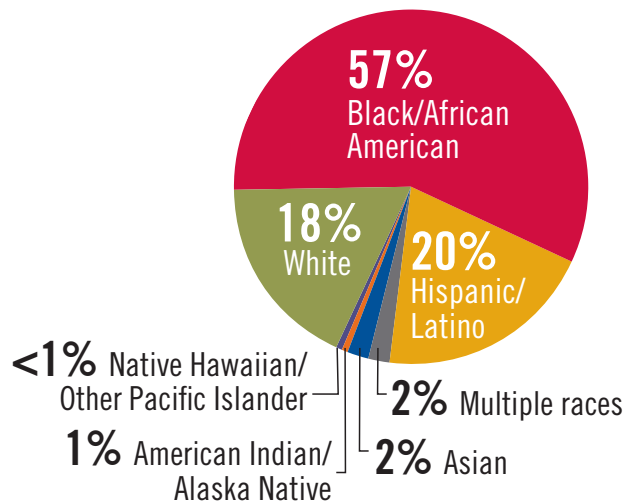
SOME IMPORTANT FACTS ABOUT HIV AND YOUNG ADULTS

- In 2013, the rate of new HIV diagnoses increased in people aged 20 to 24 but decreased in people aged 35 to 44¹
- Young adults 20 to 24 years of age account for:
 - The largest percentage of all HIV diagnoses (17%)¹
 - The second highest rate of HIV infection per 100,000 people (35.3), with people 25 to 29 years of age accounting for the highest rate (36.3)¹
- According to the most recent data provided by the Centers for Disease Control and Prevention (CDC), the rate of HIV infections classified as AIDS among people aged 20 to 24 is on the rise while declining in almost every other age group¹
- Of the 34% of high school students who reported having sexual intercourse in the previous 3 months, 41% did not use condoms²
- About 50% of young MSM with HIV are not aware that they have HIV, with higher percentages of unawareness among black and Latino MSM³

More young men than young women 20 to 24 years of age are infected with HIV.⁴

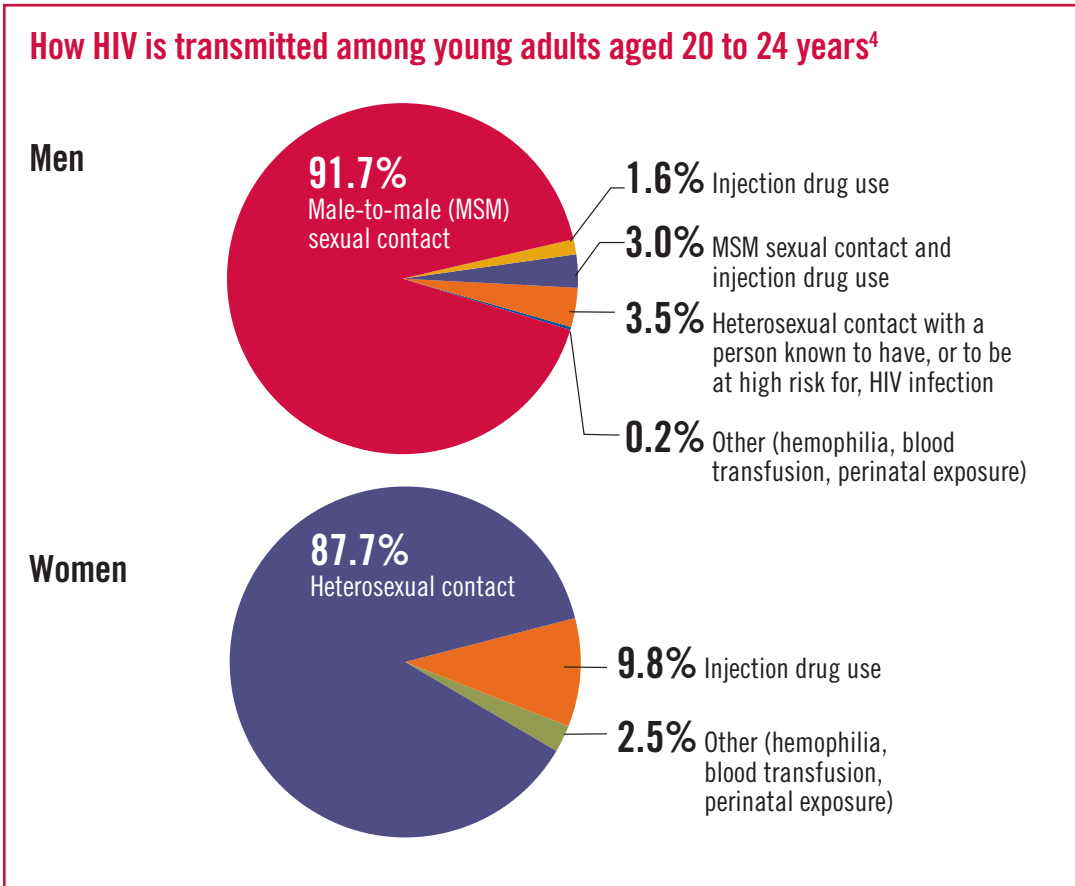


Young blacks/African Americans are disproportionately affected by HIV compared with other young adults in the United States.⁴



SOME IMPORTANT FACTS ABOUT HIV AND YOUNG ADULTS

- In 2010, only 34.5% of young people aged 18 to 24 had ever been tested for HIV⁵
 - Testing in this age group was lower among males (24.1%) than among females (45.0%)⁵
- Young people aged 12 to 24 are about as likely as older people to be linked to care after being diagnosed with HIV⁶
 - But less than one-third of young people are retained in care or start HIV medicine⁶
 - As a result, only 7% of young people reach an undetectable viral load, compared with about 40% of adults^{6,7}



References: **1.** Centers for Disease Control and Prevention. *HIV Surveillance Report, 2013*. Vol 25. http://www.cdc.gov/hiv/pdf/g-l/hiv_surveillance_report_vol_25.pdf. Published February 2015. Accessed August 3, 2015. **2.** Centers for Disease Control and Prevention. HIV among youth. http://www.cdc.gov/hiv/pdf/risk_youth_fact_sheet_final.pdf. Published July 2015. Accessed August 3, 2015. **3.** Centers for Disease Control and Prevention. HIV among gay and bisexual men. <http://www.cdc.gov/hiv/pdf/hiv-msm-english-508.pdf>. Published March 2015. Accessed August 3, 2015. **4.** Centers for Disease Control and Prevention. HIV surveillance—adolescents and young adults. http://www.cdc.gov/hiv/pdf/statistics_surveillance_adolescents.pdf. Published 2015. Accessed August 3, 2015. **5.** Centers for Disease Control and Prevention. Vital signs: HIV infection, testing, and risk behaviors among youths—United States. *MMWR*. 2012;61(47):971-976. **6.** Kapogiannis BG, Xu J, Mayer KH, et al. The HIV continuum of care for adolescents and young adults (12-24 years) attending 13 urban US centers of the NICHD-ATN-CDC-HRSA SMILE collaborative. 8th International AIDS Society Conference on HIV Pathogenesis, Treatment, and Prevention. Vancouver, July 19-22, 2015. Abstract WELBPE16. **7.** Mascolini M. Conference reports for NATAP: the HIV continuum of care for adolescents and young adults (12-24 years) attending 13 urban US centers of the NICHD-ATN-CDC-HRSA SMILE collaborative. http://www.natap.org/2015/IAS/IAS_42.htm. Accessed September 10, 2015.



Gilead and the Gilead Logo are trademarks of Gilead Sciences, Inc.

© 2015 Gilead Sciences, Inc. All rights reserved. UNBC2354 10/15