

New Jersey Cross Part Collaborative

Ellen Dufficy, BSN, MEd

Project Director Ryan White Part D/

NJ CPC Team Leader

November 16, 2017



History of NJ CPC

- * **Started in 2008: Request by National Quality Center (NQC) - a subcontractor of Health Resources Service Administration (HRSA) - to join a 5 State collaborative**
- * **States included Pennsylvania, Virginia, Texas, and Connecticut**
- * **Measures: 2 CD4, AIDS clients on HAART, 2 medical visits, CD4<200 on PCP, and annual syphilis screening**
 - * **Eventually, measures classified by race/ethnicity**
- * **Project ended in 2010 with NQC and other States, but NJ CPC continued**

NJ CPC Continued

- * NJ CPC and RW providers across the State added and deleted measures through the years with ARS system
- * Joined the In Care campaign: All sites continued to provide data to NJ CPC and enter data into the In Care Campaign
- * In Care focused on retention and viral load suppression
- * Focus shifted towards Presidential HIV Care Continuum

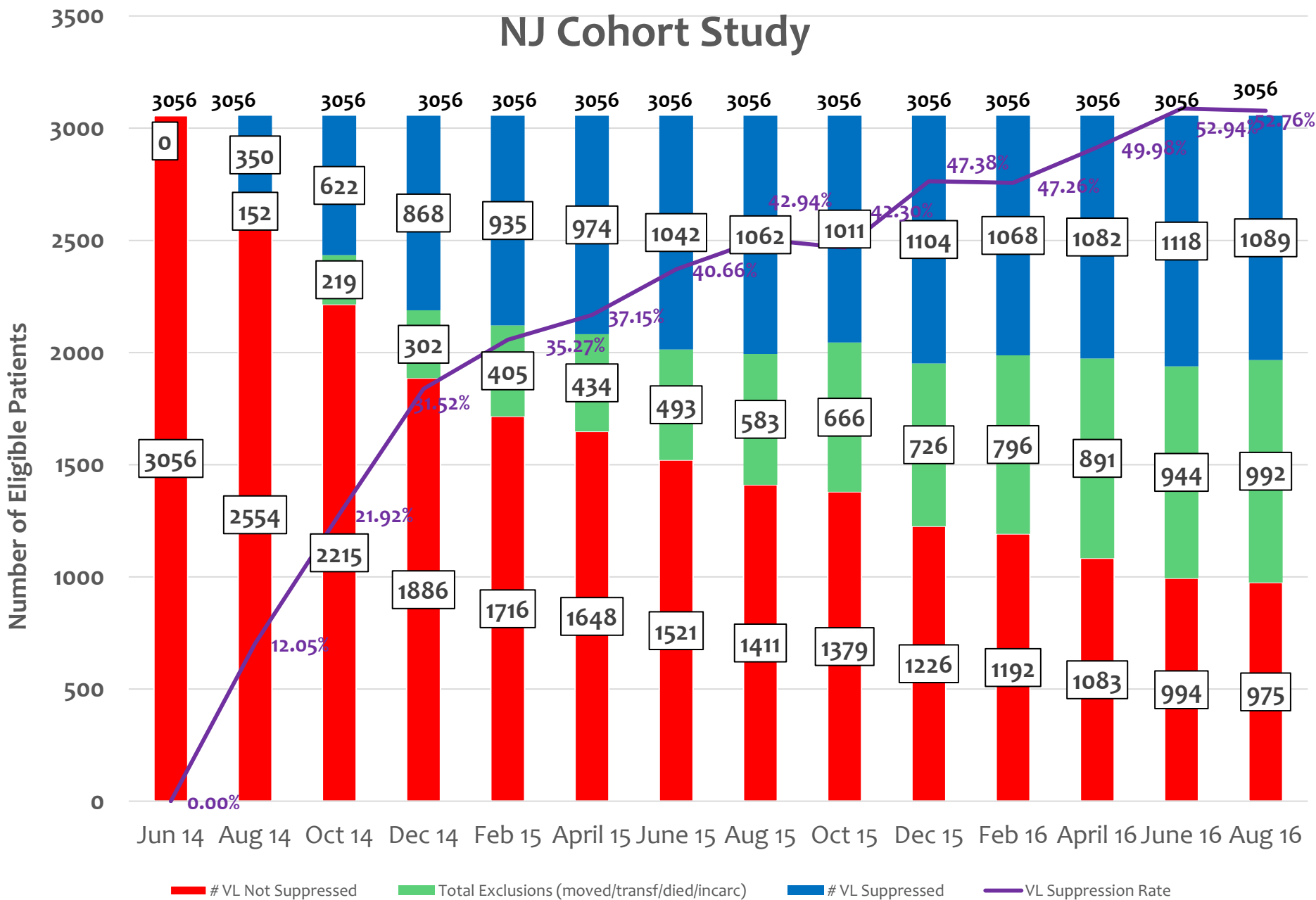
The HIV Cross-Part Care Continuum Collaborative: H4C

- * NJ again was asked to join 5 State collaborative:
Arkansas, Missouri, Mississippi, Ohio
- * Worked towards building regional capacity for closing gaps across the HIV Care Continuum to ultimately increase viral load suppression rates for individuals living with HIV
- * NJ worked towards viral load suppression for all HIV+ individuals

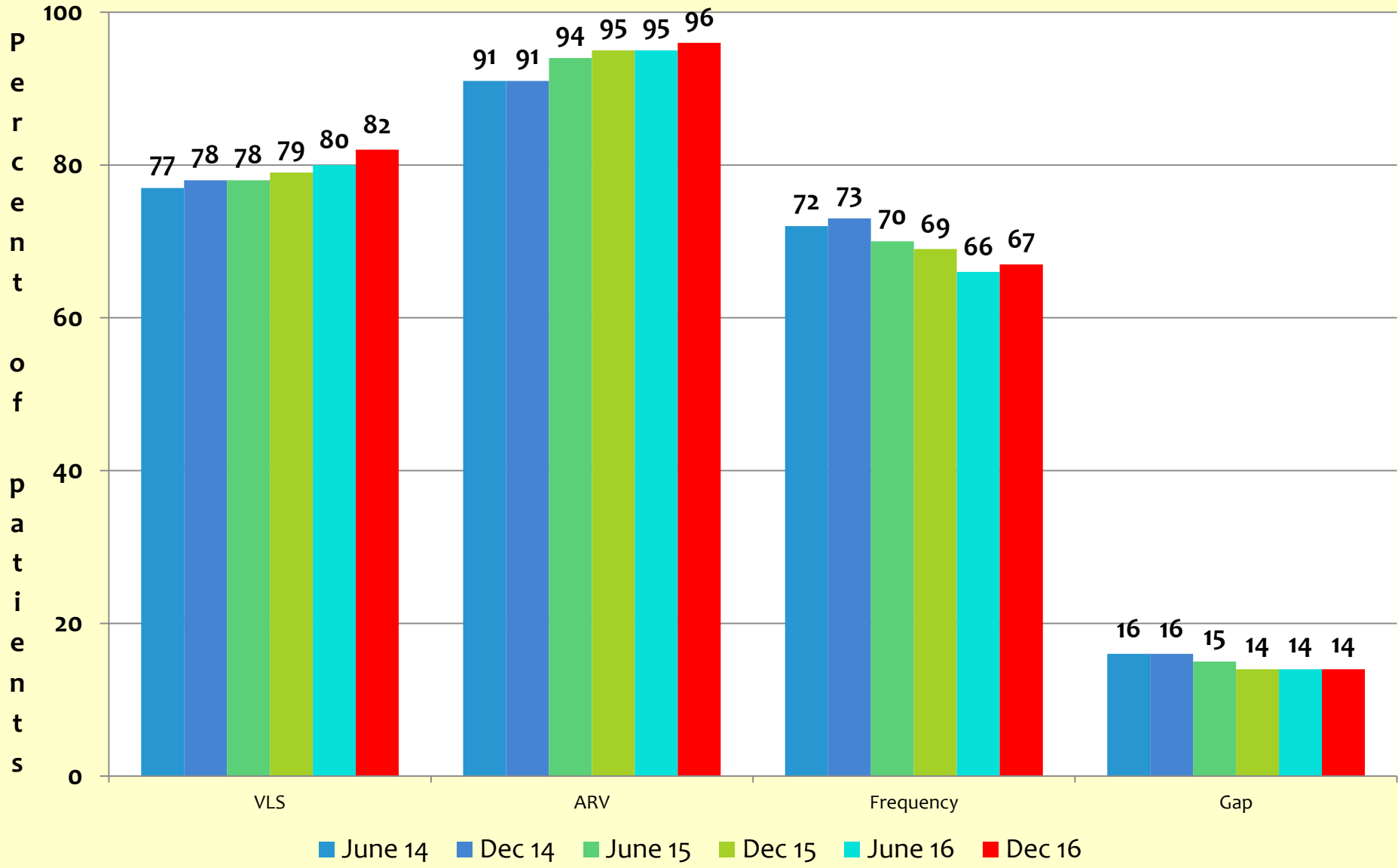
NJ Cohort: Viral Load Suppression

- * All RW medical providers submitted baseline performance data October 1, 2014
- * All RW medical providers submitted bimonthly Cohort reporting form along with the disparity CPC report
- * All RW medical providers submitted initial PDSA for their clinic
- * All RW medical providers submitted an updated PDSA June 2015
- * Response Team submitted data to NQC

NJ Cohort Study



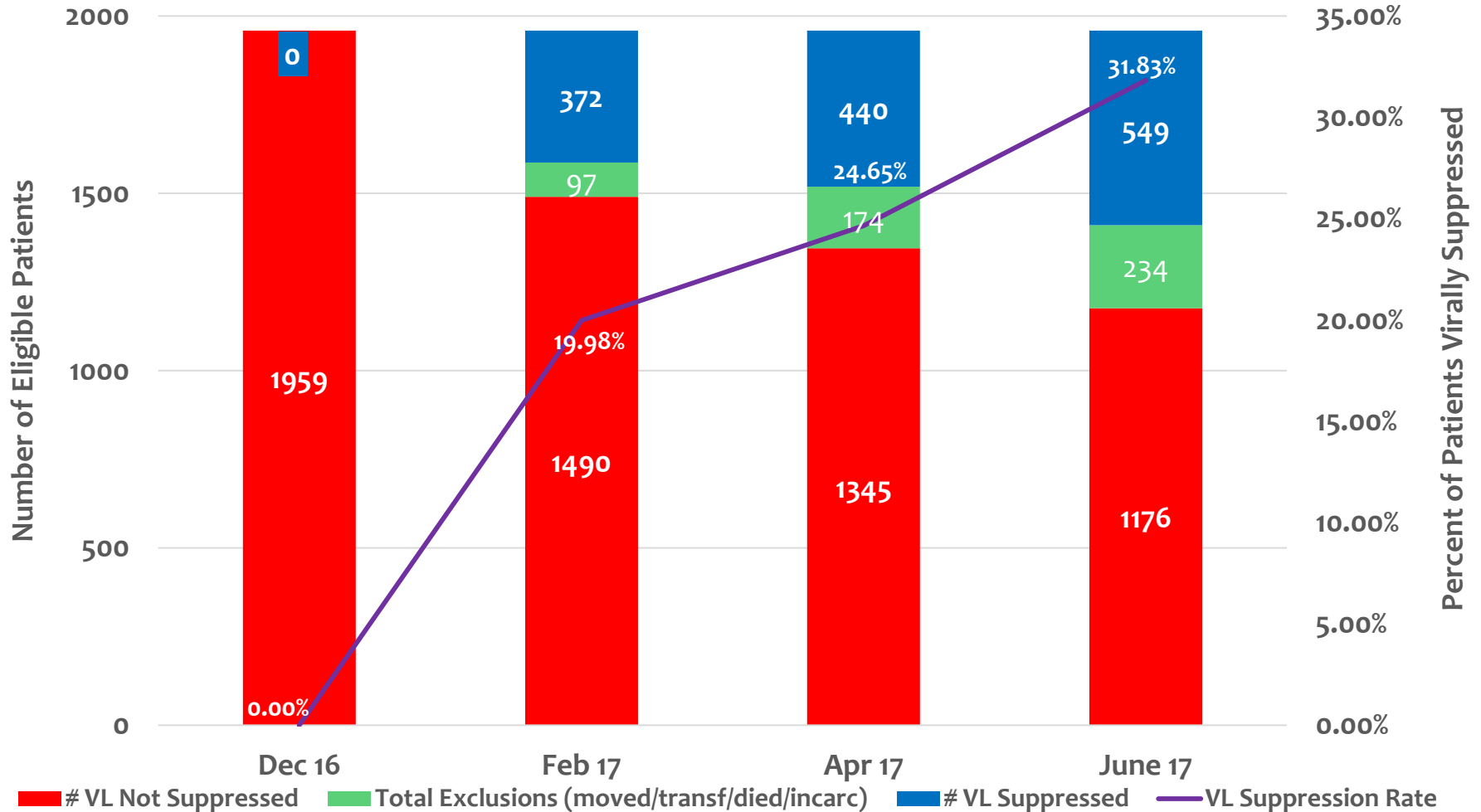
NJ H4C Statewide Results



New NJ Cohort Project

- * **New phase:**
 - * Each clinic submitted how many clients were not virally suppressed as of December 31, 2016
 - * Following this cohort until August 31, 2018
 - * Same rules: If client moves, transferred, dies, or is incarcerated longer than 6 months the client is removed

Latest Cohort Report



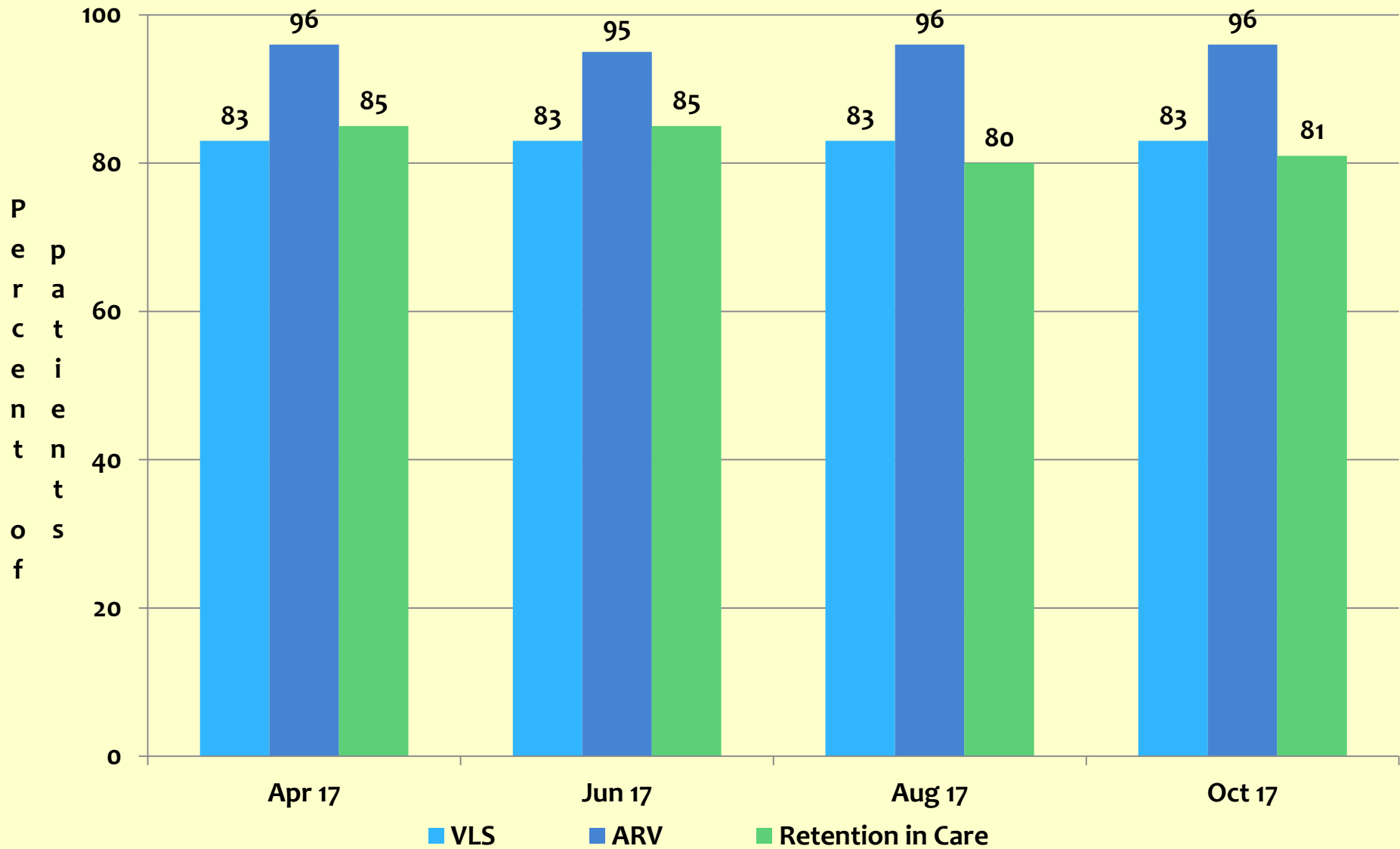
NJ CPC Data

- * **Current phase: Data collection**
 - * **Viral Load Suppression, ARV Therapy, and Retention in care**
 - * **Inverse of Gap Measure for Retention**
 - * **Same Disparities: Race, Gender, Age, and Insurance**

NJ CPC Goals

- * **New Goals set for the Performance Measures**
 - * **Following National HIV/AIDS Strategy (NHAS) Goals**
- * **90% - 90% - 90%: Retain 90% of the clients in care; 90% receive ARV; 90% are Virally Suppressed**
- * **Can New Jersey meet the goals?**

NJ CPC Statewide Results





**Ellen Dufficy, BSN, MEd
NJ Department of Health
RWPD Project Director/Team Leader NJ CPC**

**609-777-7795
Ellen.Dufficy@doh.nj.gov**

Questions?

